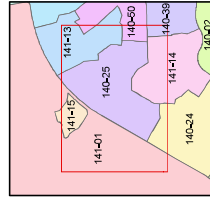
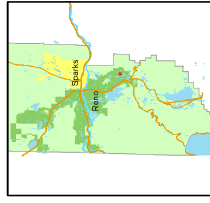


Assessor's Map Number  
**140-25**

STATE OF NEVADA  
**WASHOE COUNTY**  
ASSESSOR'S OFFICE  
Joshua G. Wilson, Assessor  
1001 East Ninth Street  
Building D  
Reno, NV 89512  
Phone: (775) 328-2331



0 25 50 75 100  
Feet  
1 inch = 100 feet



created by: **MLH 6/20/2011**  
last updated: **MLH 3/28/12**  
area previously shown on map(s)  
**140-02**

NOTE: This map was prepared for the use of the Washoe County Assessor for assessment and illustrative purposes only. It does not represent a survey and should not be relied upon as to the sufficiency or accuracy of the data delineated hereon.

**(#4141)**  
**VILLAGES AT DAMONTE RANCH**  
**UNIT 13A**  
A PORTION OF THE N 1/2 OF SECTION 15  
T18N - R20E

**(#4378)**  
**VILLAGES AT DAMONTE RANCH**  
**UNIT 13C**

